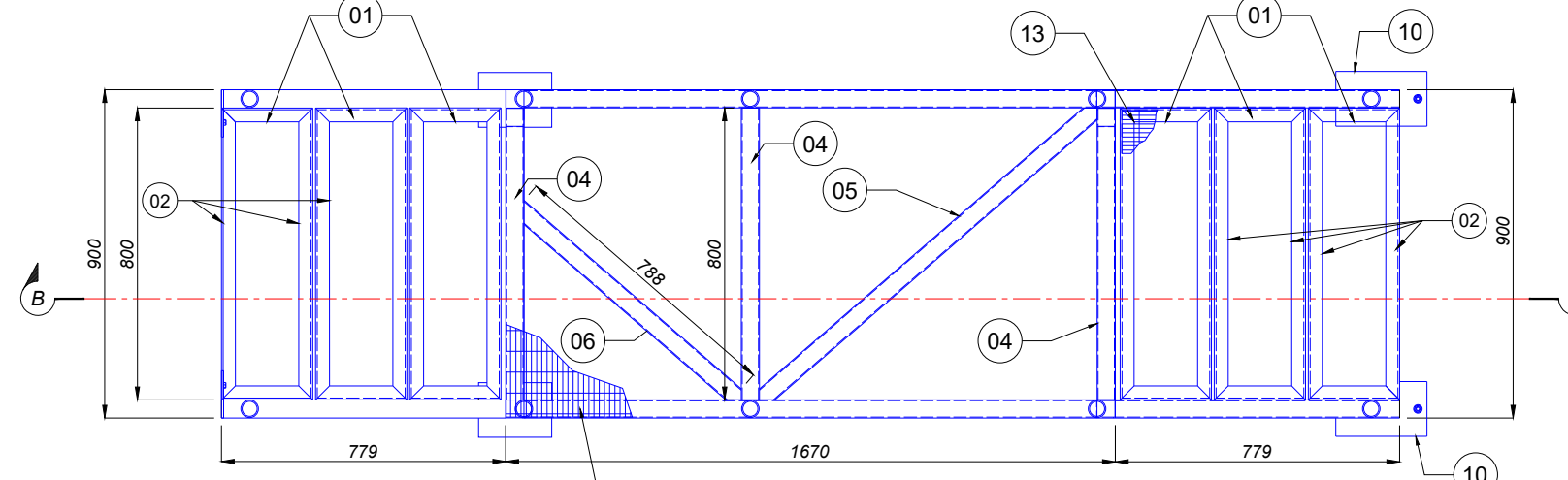
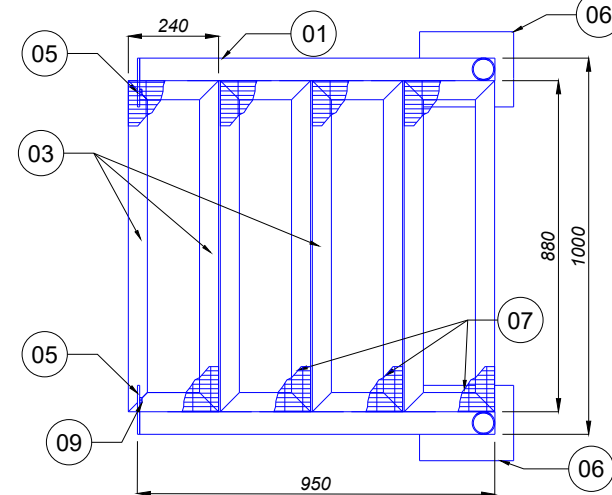
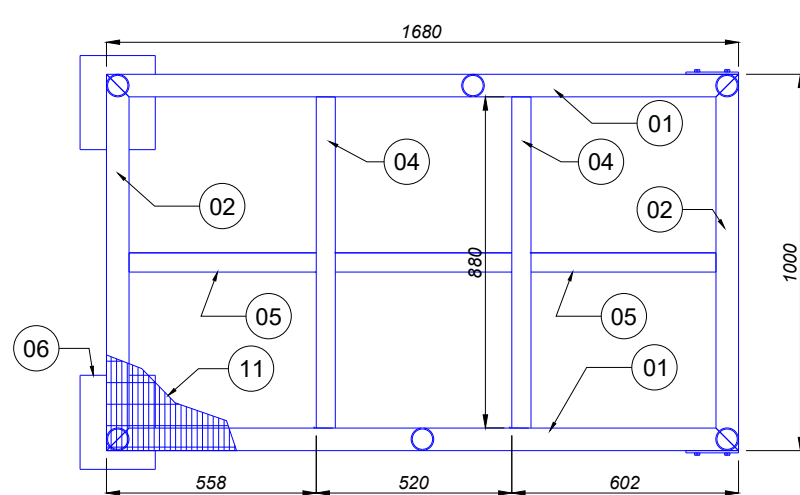


**CORTE A-A**  
(ESCALA: 1:20)

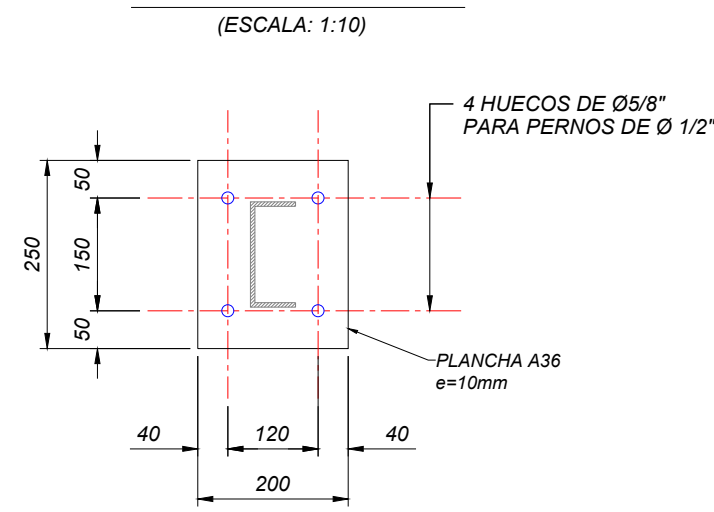


(ESCALA: 1:20)

[illegible]

Technical drawing of a window frame cross-section (CORTE C-C). The drawing shows a vertical frame with a horizontal sash. Key dimensions include a total width of 866, a distance of 877 from the left edge to the center of the vertical frame, and a total height of 1910. The vertical frame has a width of 200. The horizontal sash has a height of 200. The drawing includes labels for various components: 01 (top left corner), 02 (top right corner), 03 (bottom left corner), 04 (bottom right corner), 05 (top right corner), 06 (bottom left corner), 07 (top right corner), 08 (bottom left corner), 09 (top right corner), and 10 (bottom left corner). The text 'CONTINUA MODULO 6' is written twice, indicating the continuation of the module. The text 'DE MOD' is partially visible on the right side.

**CORTE D-D**  
(Escala: 1:20)



Technical drawing of a rectangular plate with the following specifications:

- Overall width: 130
- Overall height: 188
- Plate material: PLANCHA A36
- Plate thickness:  $e=6\text{mm}$
- Two holes (2 HUECOS) of diameter  $\varnothing 5/8"$  for bolts of diameter  $\varnothing 1/2"$ .
- Distance between hole centers: 80
- Distance from bottom edge to hole center: 60
- Distance from side edge to hole center: 60
- Hole diameter:  $\varnothing 16$

Technical drawing of a rectangular plate (PLANCHA A36) with dimensions 140x200 mm and thickness  $e=6\text{mm}$ . The plate is positioned on a base with dimensions 30, 80, and 30 mm. The drawing indicates two holes (2 HUECOS DE  $\text{Ø}5/8"$ ) for bolts (PERNOS DE  $\text{Ø } 1/2"$ ).

30  
25  
65

GROUT CEMENTICIO

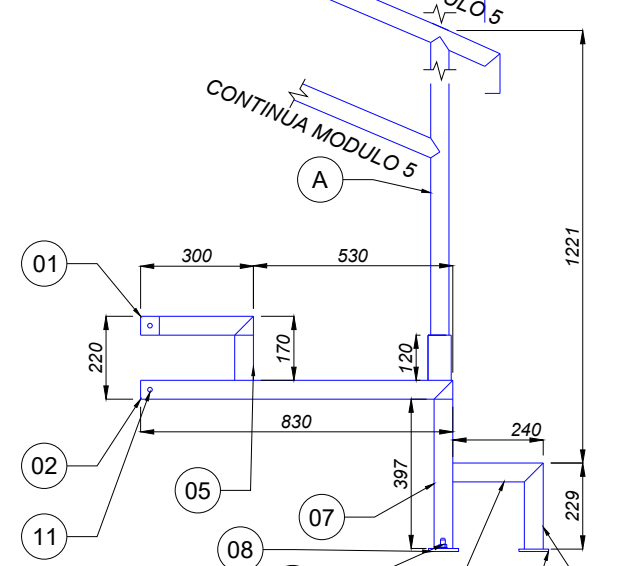
LOSA EXISTENTE

PERNOS DE EXPANSIÓN  
TIPO HILTI KB3 Ø12x120mm

PLANCHAS EMPES

VER DE PLANCHA EMPES

476




LISTA DE MATERIALES PLATAFORMA MODULO #2					
ITEM	DESCRIPCIÓN	UN.	CANTIDAD	PIEZAS	TOTAL
01	PERFIL C 140x60x4,76mm PLEGADO FRIO ASTM A36	mm	2750,00	2	5500,00
02	PERFIL C 140x60x4,76mm PLEGADO FRIO ASTM A36	mm	1000,00	2	2000,00
03	PERFIL C 140x60x4,76mm PLEGADO FRIO ASTM A36	mm	860,00	2	1720,00
04	PERFIL C 100x50x4,76mm PLEGADO FRIO ASTM A36	mm	860,00	2	1720,00
05	ANGULAR 2"x2" =3/16" ASTM A36	mm	1000,00	2	2000,00
06	ANGULAR 2"x2" =3/16" ASTM A36	mm	880,00	3	2640,00
07	ANGULAR 2"x2" =3/16" ASTM A36	mm	240	2	480
08	ANGULAR 2"x2" =3/16" ASTM A36	mm	2478	2	4956
09	ANGULAR 2"x2" =3/16" ASTM A36	mm	219	2	438
10	PLANCHA METÁLICA ASTM A-36 250x200 mm; (e= 10 mm)	pza	4,00	1	4,00
11	PLANCHA METÁLICA ASTM A-36 200x140 mm; (e= 4,76 mm)	pza	6,00	1	6,00
12	PLANCHA METÁLICA ASTM A-36 140x60 mm; (e= 4,76 mm)	pza	8,00	1	8,00
13	PERNO HEXAGONAL A193 GR 71 Ø1/2" x1 1/2" C/TUERCA ZINCADO	pza	28	2	28,00
14	PERFIL C 140x60x4,76mm PLEGADO FRIO ASTM A36	mm	400,00	2	800,00
15	TUBO Ø2" (60mm)e=3mm, ASTM A36	mm	0,12	3	0,36
16	GRATING AR3 P/P/PLATAFORMA	m <sup>2</sup>	2,76	1	2,76
17	GRATING AR3 P/P/PELDAÑOS	m <sup>2</sup>	0,21	1	0,21
18	PERNOS DE EXPANSIÓN TIPO HILTI KB1 Ø1/2"x120mm	pta	16	1	16

LISTA DE MATERIALES PLATAFORMA MODULO 04						
ITEM	DESCRIPCIÓN	UNIDAD	CANTIDAD	PIEZAS	TOTAL	
01	ANGULAR 38x38x4.8 ASTM A36	mm	250	24	6000	
02	ANGULAR 38x38x4.8 ASTM A36	mm	800	24	19200	
03	PERFIL C 150x50x15x4,76mm PLEGADO FRIO ASTM A36	mm	154	4	616	
04	PERFIL C 150x50x15x4,76mm PLEGADO FRIO ASTM A36	mm	800	3	2400	
05	PERFIL C 150x50x15x4,76mm PLEGADO FRIO ASTM A36	mm	1774	1	1774	
06	PERFIL C 150x50x15x4,76mm PLEGADO FRIO ASTM A36	mm	788	4	3152	
07	PERFIL C 150x50x15x4,76mm PLEGADO FRIO ASTM A36	mm	1670	2	3340	
08	PERFIL C 150x50x15x4,76mm PLEGADO FRIO ASTM A36	mm	988	4	3952	
09	PERFIL C 150x50x15x4,76mm PLEGADO FRIO ASTM A36	mm	609	2	1218	
10	PLANCHILLA METALICA (200x150x10mm) ASTM A36	m2	0.09	4	0.36	
11	TUBERÍA STD. Ø 2" P/BARANDA	m	120	6	720	
12	GRATING AR33 P/PLATAFORMA	m <sup>2</sup>	1.59	1	1.59	
13	GRATING AR33 P/PELDAÑOS	m <sup>2</sup>	0.21	6	1.26	
14	PERNOS DE EXPANSIÓN TIPO HILTI KB3 Ø12"x120mm	pza	8	1	8	
15	PLANCHILLA METALICA (80x60x6mm) ASTM A36	pza	3	1	3	
16	PERNOS ACERO INOX. 50x50x4 mm CON AGUERO Ø12 mm	m <sup>2</sup>	0.0025	1	0.0025	
17	PERNO HEXAGONAL A193 GR 8 Ø3/8" x 1" C/UTERZA ZINCADO	pza	1.00	1	1.00	
18	ARANDELA PLANA Ø3/8" ZINCADA	pza	1.00	2	2.00	

LISTA DE MATERIALES PLATAFORMA MONO #6					
ITEM	DESCRIPCIÓN	UNIDAD	CANTIDAD	PIEZAS	TOTAL
01	ANGULAR 2"x2" e=3/16" ASTM A36	mm	300,00	2	600,00
02	ANGULAR 2"x2" e=3/16" ASTM A36	mm	830	2	1660
03	ANGULAR 2"x2" e=3/16" ASTM A36	mm	240	2	480
04	ANGULAR 2"x2" e=3/16" ASTM A36	mm	800	2	1600
05	ANGULAR 2"x2" e=3/16" ASTM A36	mm	170	2	340
06	ANGULAR 2"x2" e=3/16" ASTM A36	mm	299	2	598
07	PERFIL C 100x50x4,76mm PLEGADO FRIO ASTM A36	mm	327	2	654
08	PLANCHA METALICA (125x80x10mm) ASTM A36	pza	2	1	2
09	PLANCHA METALICA (80x40x6mm) ASTM A36	pza	2	1	2
10	PERNOS DE EXPANSIÓN TIPO HILTI K31 D1/2"x120mm	pza	4	1	4
11	PERNO HEXAGONAL A193 GR 87 Ø3/8"x1" C/TUERCA ZINCADO	pza	4	1	4,000
12	GRATING ARS 3 P/PLATAFORMA	m <sup>2</sup>	0,42	1	0,42
13	GRATING ARS 3 P/PELDAÑOS	m <sup>2</sup>	0,19	2	0,38

MODULO #6

**VISTA EN PLANTA**  
(ESCALA: 1:20)

**VISTA LATERAL**